

# Tipi Carousel with Top Brace

ELE400065



Item no. ELE400065-3717GR

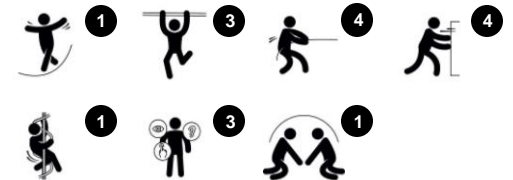
### General Product Information

Dimensions LxWxH 120x120x118 cm

Age group 4+

Play capacity (users) 8

Colour options



WOW, a spinning TIPI! The whimsical shapes of the TIPI carousel with top brace attracts children in its own right. And they will play here again and again, thanks to the multifunctionality of the slick TIPI. Responsive to children's movements, the TIPI spins when pushed or pulled. Apart from being a fun negotiation and turn-taking game, the pushing and pulling build

muscles and cardio. In the TIPI children can lie, sit or stand with the support of the side bars or the top frame. This welcomes children with mobility disabilities to be part of the play, too. The spinning movement trains the sense of space and balance. The sense of balance is fundamental to all other motor skills and is important for motor control, for instance being

able to sit still or cycle securely, without falling. The TIPI facilitates universal, inclusive play. It's good fun!



Data is subject to change without prior notice.

# Tipi Carousel with Top Brace

ELE400065



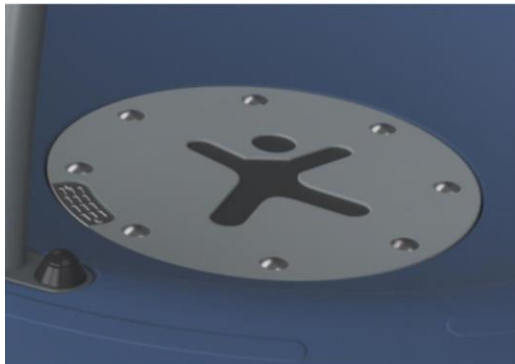
The bowls are made of recyclable PE. The bowls are moulded in one piece with integrated metal thread bushings and water drain hole to ensure high durability in all climates around the world.



Top brace is made of welded steel. The steel is hot dip galvanised inside and outside with lead free zinc and with outside powder coated top-finish.



Heavy duty engineered bearing system with single row deep groove ball bearings with rubber seals. The fully closed bearing construction is lifetime lubricated and maintenance free.



Tipi Carousel has unique water drain system. Water drains automatically - assuring that carousel is always dry and ready to use. The water drain is covered by stainless steel strainer.



The Tipi Carousel is available in four different colour options.



The sand colored variant is made of rotomolded stone mixed PE material with non skid surface texture. Minor differences in the stone mix visuality of the material are to be expected.

Item no. ELE400065-3717GR

## Installation Information

Max. fall height	100 cm
Safety surfacing area	21,3 m <sup>2</sup>
Numbers of installers (persons)	2
Total installation time	2.5
Excavation volume	0,44 m <sup>3</sup>
Concrete volume	0,31 m <sup>3</sup>
Footing depth (standard)	100 cm
Shipment weight	84 kg
Anchoring options	In-ground ✓ Surface ✓

## Warranty Information

Hollow PE parts	5 years
Bearing construction	5 years
Galvanised steel	10 years
Spare parts guaranteed	10 years

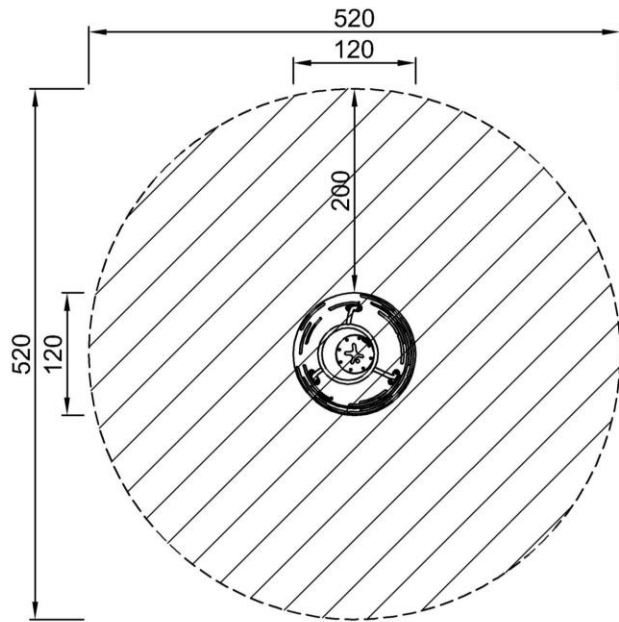


# Tipi Carousel with Top Brace

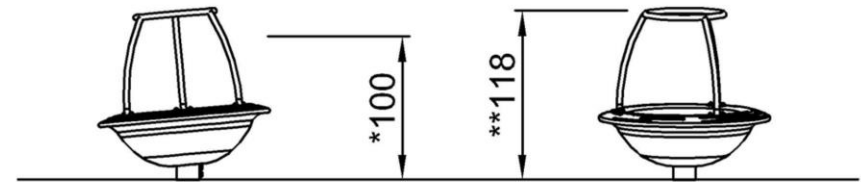
ELE400065

\* Max fall height | \*\* Total height | \*\*\* Safety surfacing area

\* Max fall height | \*\* Total height



ELE400065GR  
\*100cm  
\*\*118cm  
\*\*\*21.3m<sup>2</sup>



ELE400065GR  
1:100

[Click to see 1:100 ratio TOP VIEW](#)

# Tipi Carousel with Top Brace

ELE400065



## Top frame

**Physical:** support for standing, gripping, training sense of balance when spinning.

**Social-Emotional:** supports standing for more children at a time. Adds support and feeling of security for children with mobility impairments or disabilities.



## Three side bars

**Physical:** support for gripping, pushing and pulling, training muscles. Back support for seating, also for children with mobility impairments or disabilities.

**Social-Emotional:** supports seated positions for more children. Facilitate social interaction between inside and outside, when children spin each other. Facilitates use from outside of Tipi Carousel, and turn-taking.



## Spacious platform

**Physical:** allows for more body positions: sitting, lying, standing, which facilitates use for children with physical disabilities.

**Social-Emotional:** facilitates many children using the Tipi Carousel simultaneously, training cooperation and turn-taking



## Shallow entry rim

**Physical:** support for entering and staying in when spinning. Eases entry for children with a range of mobility disabilities.

**Social-Emotional:** feeling of security when children lie or sit in Tipi Carousel. Allows for more feeling securely seated when spinning.

# Tipi Carousel with Top Brace

ELE400065



**PHYSICAL**  
Joy of movement:  
motor skills, muscle, cardio  
and bone density



**SOCIAL-EMOTIONAL**  
Joy of being together:  
teamwork, tolerance and  
sense of belonging



**COGNITIVE**  
Joy of learning:  
curiosity, understanding of causal  
relationships and knowledge of the world



**CREATIVE**  
Joy of creating:  
co-creation and experimenting  
with materials



**BALANCE**  
To balance is to stay upright when walking or standing on a surface that makes this challenging (e.g. a wobbly, inclined, or narrow surface).



**HANG IN ARMS**  
To hang in arms is the act of carrying the body with the hands or arms, possibly to traverse to another platform or play item.



**SENSORY**  
To sense is the act of taking in information with the sensory system: seeing, feeling, hearing or sensing with the body.



**BOUNCE**  
To bounce is the act of bouncing on a responsive, flexible, elastic or tensile surface.



**JUMP**  
To jump is the act of jumping up or down on a hard surface.



**SLIDE**  
To slide is the act of moving fast downwards seated on a slide.



**CLIMB**  
To climb is the act of moving upwards, cross-coordinating arms and legs, on a vertical or inclined surface or net.



**PULL**  
To pull is the act of pulling an item towards you or you towards an item with one or both hands, or possibly using the entire body.



**SOCIALIZE**  
To socialize is the act of meeting, communicating or cooperating in an activity that stimulates and facilitates social interaction.



**CONSTRUCT**  
To construct is the act of creating new patterns, shifting items or materials to new positions or constructing with materials that can be transformed or manipulated.



**PUSH**  
To push is the act of pushing an item away from you with one or both hands, possibly with the entire body.



**SPIN**  
To spin involves a fast, repeated horizontal or vertical turn of the body on a piece of equipment that facilitates the movement.



**CRAWL**  
To crawl is the movement of moving forwards or backwards, cross-coordinating arms and legs, on a horizontal or slightly inclined surface.



**ROCK**  
To rock is the action of rocking back and forth, or sideways, on e.g. a piece of spring equipment.



**SWAY**  
To sway is the movement of swaying back and forth, or around, lying, seated or possibly standing, in a pendulant or circular movement, e.g. on a hammock or on a rope.



**DRAMATIC PLAY**  
Dramatic play is motivated through play items that stage a frame, place or environment for acting out make believe or role play scenarios.



**ROTATE**  
To rotate involves a vertical or horizontal slower paced turn of the body, facilitated by a piece of equipment.



**SWING**  
To swing is the movement of swinging back and forth, or in circular movement, seated, standing or lying, in an unhindered arc.



**GLIDE**  
To glide is the act of moving from one point to another without shifting the feet, in a horizontal or vertical movement, in a seated, lying or standing position, letting gravity do the work.



**RULES PLAY**  
Rules play is motivated through play items that suggest games-with-rules, cooperation and team work, e.g. tic-tac-toe, timers or ball games.



**WONDER**  
To wonder is motivated through play items that make children need and use their logical, abstract or creative thinking skills, as well as their memory.